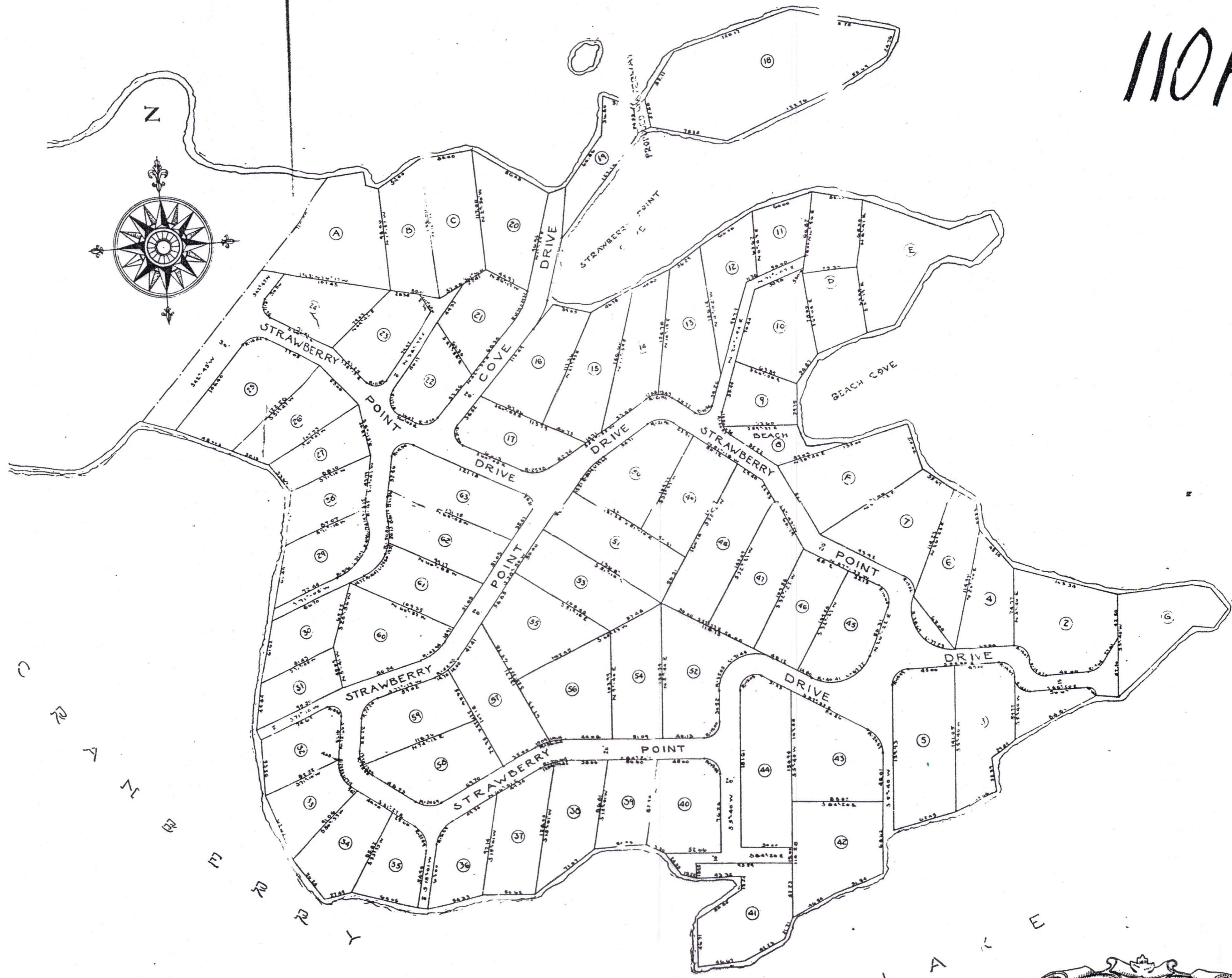


C R A N B E R R Y (N O R T H L A K E) L A K E

110H



LOTS A, B, C, D, E, F, AND G, ARE
ALSO SHOWN ON MAP NO. 4 DATED NOV. 1924
SURVEYED BY H. MONKLE SURVEYOR.
SAID MAP BEING ON FILE IN THE COUNTY
CLERK'S OFFICE, NEWTON, NEW JERSEY.

Carl A. ...
1444 B. ENGINEER & SURVEYOR

MAP NO. 14
- STRAWBERRY POINT -
CRANBERRY LAKE - SUMMER COLONY
CRANBERRY LAKE DEVELOPMENT COMPANY
30 PARK PLACE NEWTON, N. J.
JUNE 1, 1927

Scale

BUSINESS RECORDS CORPORATION