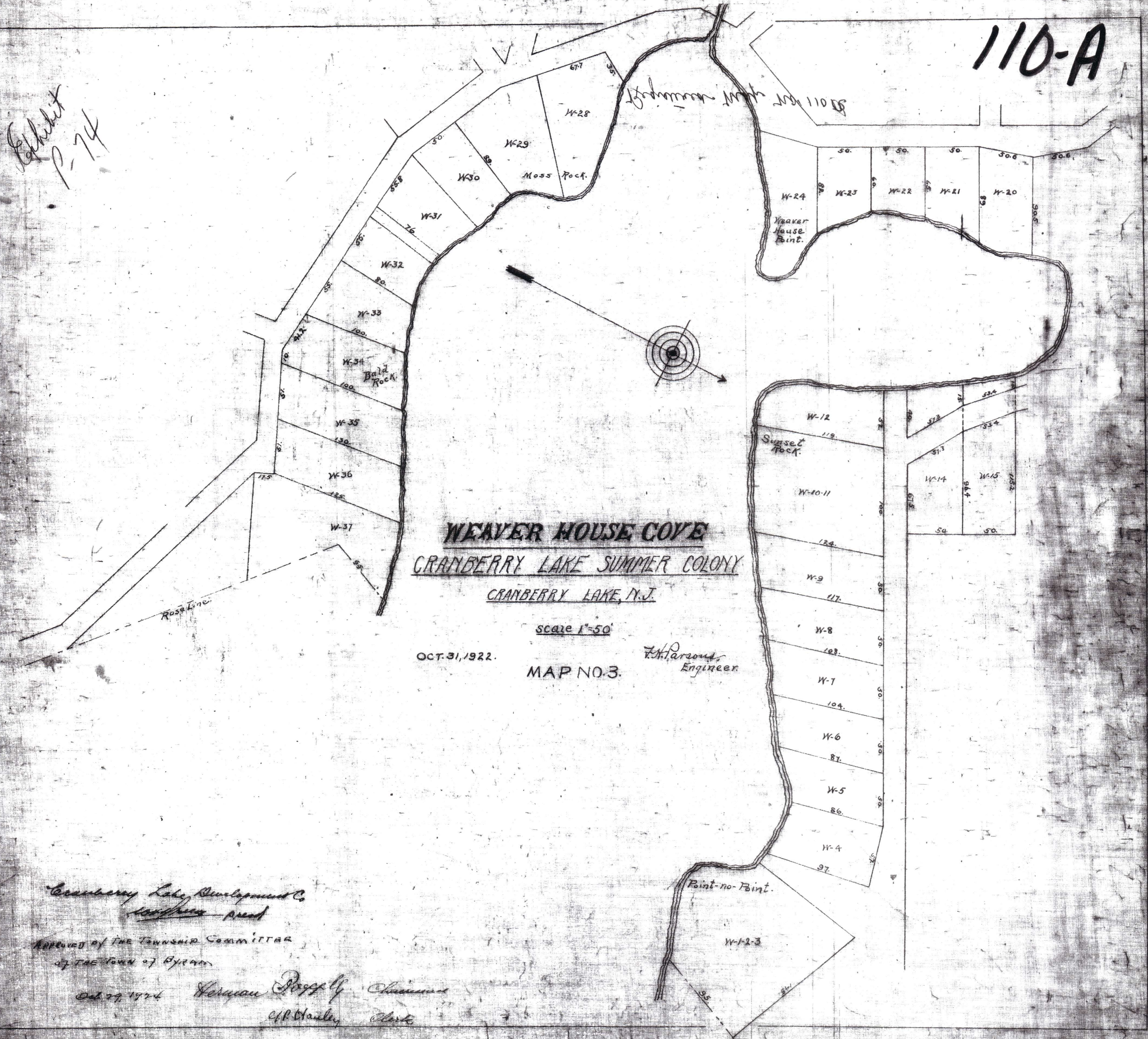


110-A

Sketch
P-74



WEAVER HOUSE COVE
CRANBERRY LAKE SUMMER COLONY
CRANBERRY LAKE, N.J.

Scale 1"=50'

OCT. 31, 1922.

MAP NO. 3.

F.H. Parsons,
Engineer

Cranberry Lake Development Co.
Sandy Hook Road

Approved by the Township Committee
of the Town of Bryan

Oct. 29, 1924
Herman Papply, Chairman
C.R. Stanley, Clerk

Point no Point

Point no Point