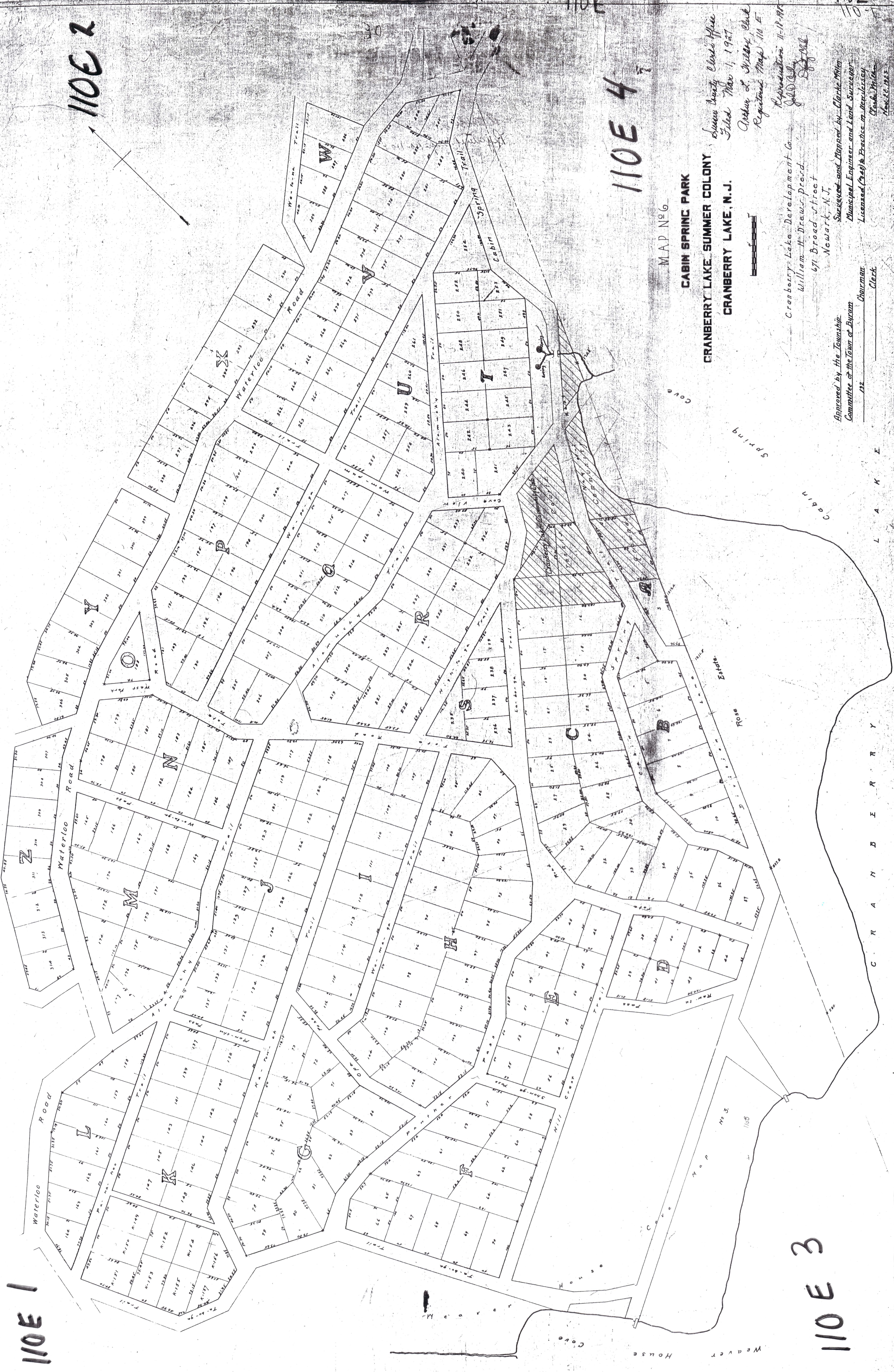


110E 1

110E 2

110E 4

110E 3



MAP NO 6
CRANBERRY LAKE SUMMER COLONY
CABIN SPRING PARK
CRANBERRY LAKE, N. J.

Summer Colony Clerk's Office
 Filed Nov 1, 1927
 Arthur L. Miller, Clerk
 Registered Map No 6

Representation H. P. Rice
 J. D. O'Neil
 671 Broad Street
 Newark, N. J.

Cranberry Lake Development Co.
 William H. Drew, Pres.
 671 Broad Street
 Newark, N. J.

Surveyed and Mapped by Charles Miller
 Municipal Engineer and Land Surveyor
 Licensed (No 9) to Practice in New Jersey
 Clerk, Mich.
 March 10, 1923

Approved by the Township
 Committee of the Town of Bryant
 Chairman _____
 Clerk _____

C R A N B E R R Y
 L A K E